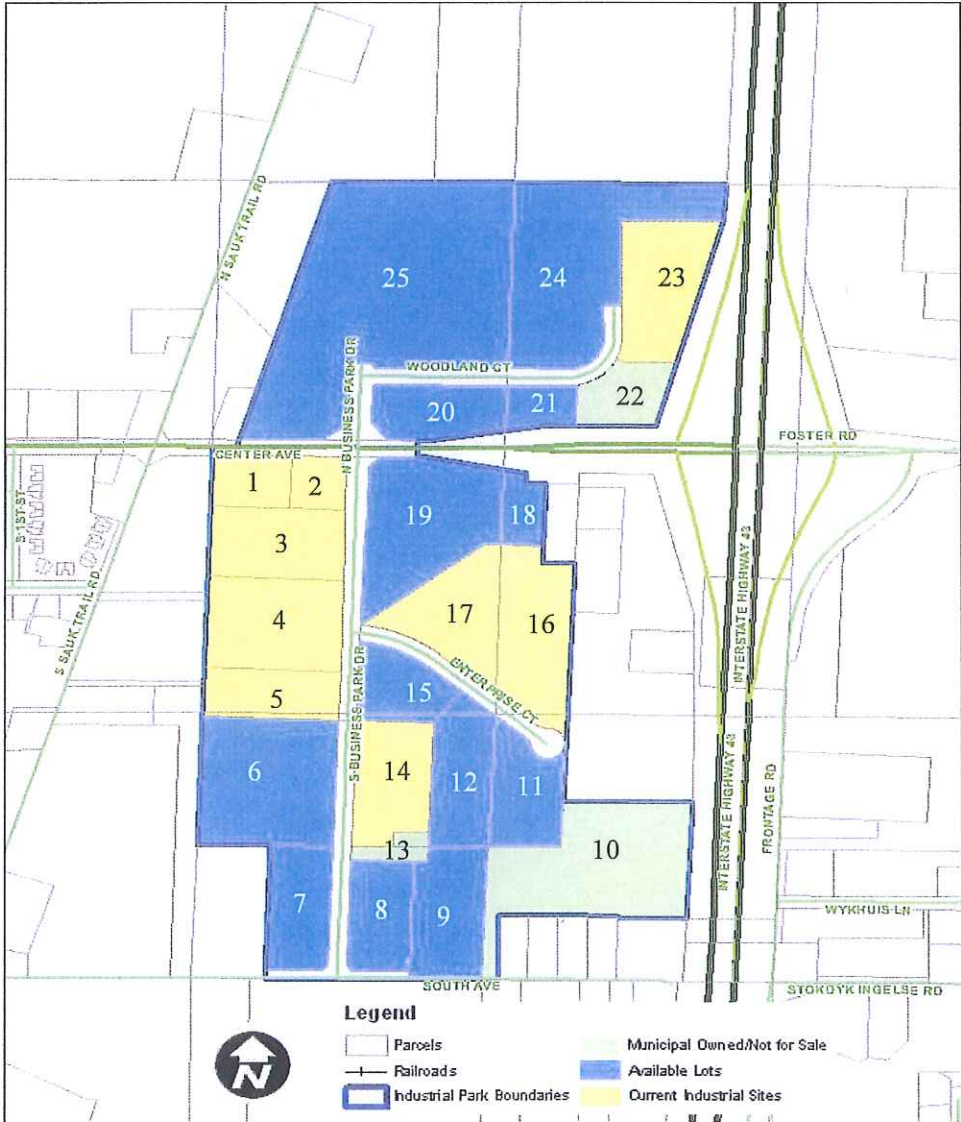


# Oostburg Business Park, Oostburg, WI

## BUSINESS PARK PROFILE



### PROPERTY OWNERS

1. East Town LLC
2. Best Systems-Oostburg
3. Oostburg Concrete
4. Morgan Aircraft
5. Warehousing GH LLC
6. Available (9.15 acres)
7. Available (7.75 acres combined with #8)
8. Available (7.75 acres combined with #7)
9. Available (4.39 acres)
10. Municipal Owned/Not for Sale
11. Available (11.6 acres combined with #12 & #15)
12. Available (11.6 acres combined with #11 & #15)
13. Municipal Owned/Not for Sale
14. Pre-Heat Inc.
15. Available (11.6 acres combined with #11 & #12)
16. Dutchland Plastics Inc.
17. Dutchland Plastics Inc.
18. Available (10 acres combined with #19)
19. Available (10 acres combined with #18)
20. Available (5.2 acres combined with #21)
21. Available (5.2 acres combined with #20)
22. Municipal Owned/Not for Sale
23. Expedition Log Homes LLC
24. Available (36.3 acres combined with #25)
25. Available (36.3 acres combined with #24)

### VILLAGE OF OOSTBURG

The Village of Oostburg is located along I-43 and near to Lake Michigan. Oostburg is a moderately growing village with a small town friendly atmosphere. This business climate is favorable and you will find a congestion-free environment for business.

### VILLAGE CONTACT INFORMATION

927 Center Ave, Suite 4  
 PO Box 700227  
 Oostburg, WI 53070-0227  
 (920) 564-3214  
[www.oostburg.org](http://www.oostburg.org)